

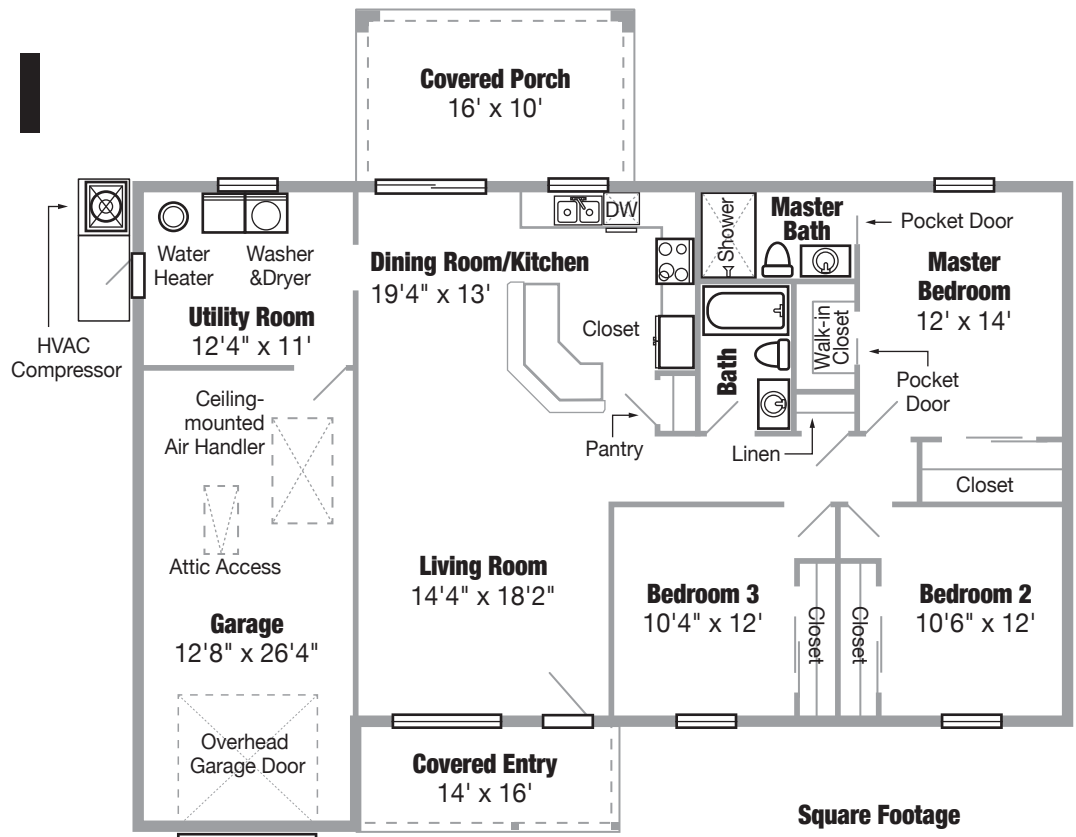


FLOOR PLAN: The Cory I

FEATURES

The Cory I boasts over 1,400 square feet of luxurious living space. As with our other models it's crafted with our customary top-quality workmanship and finished with some of the finest materials available in today's marketplace. This model features:

- An oversized single-car garage that allows for additional workspace
- A spacious utility and laundry room with plenty of room to work
- An expansive floor plan with an open living room, dining room, and kitchen
- A welcoming and inviting covered entry at the front of the house
- A large, comfortable covered porch providing a relaxed space for entertaining, cooking on an outdoor grill, or just enjoying the gorgeous Florida weather



Square Footage

Living	1,434
Garage	338
Covered Entry	88
Covered Porch	160
Total	2,020



Telephone: (352) 897-5083 ■ Email: info@homesbyannandavid.com
 9458 N. Deltona Blvd. ■ Citrus Springs, Florida ■ 34434 ■ www.HomesByAnnDavid.com